

lyra barhocker 11-683



Hannes Wettstein, 2007

Sitz gepolstert, Hinterfüsse und Rücken massiv gebogen
B48, T47, H104, SH80

Hannes Wettstein, 2007

Assise rembourré, dossier et pieds arrière en bois massif
cintré

L48, P47, H104, HAss80

Hannes Wettstein, 2007

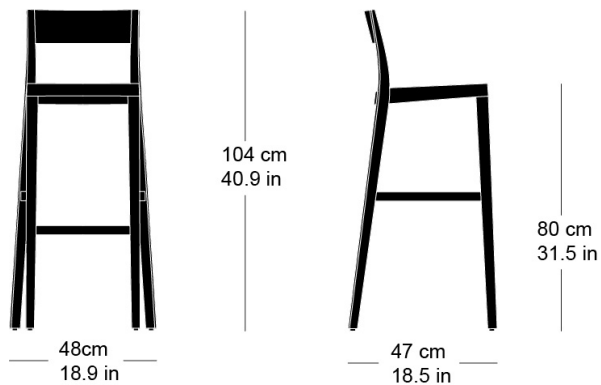
Upholstered seat, rear legs and back solid bentwood
W48, D47, H104, SH80

Varianten / variantes / variants



Technische Angaben / specifications / specifications

Masse / mesure / measure



Gewicht / ponds / weight 6.0 kg 12.0 lb

Polsterung / rembourrage /
upholstery ja / qui / yes

lyra barhocker 1 1-683

Holzarten / types de bois / types of wood

Belag / revêtement / surface



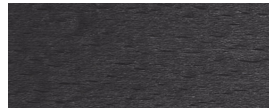
Buche natur BN 000 AM
Beech natural BN 000 AM
Hêtre naturel BN 000 AM



Buche schwarz BB 203 SG
Beech black BB 203 SG
Hêtre noir BB 203 SG



Eiche natur EN 000 AM
Oak natural EN 000 AM
Chêne naturel EN 000 AM



Buche anthrazit BB 200 SG
Beech anthracite BB 200 SG
Hêtre anthracite BB 200 SG



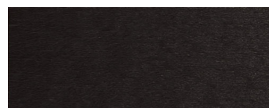
Esche natur FN 000 AM
Ash natural FN 000 AM
Frêne naturel FN 000 AM



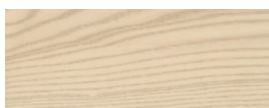
Eiche Räuchereiche EB 535 AM
Oak smoked oak EB 535 AM
Chêne chêne fumée EB 535 AM



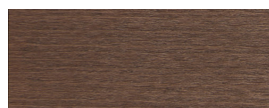
Buche geweisst BG 172 SG
Beech whitewashed BG 172 SG
Hêtre teinté blanc BG 172 SG



Buche Ebony BB 100 SG
Beech ebony BB 100 SG
Hêtre teinté ebony BB 100 SG



Esche weisspigmentiert FW 001 OL
Ash white-pigmented FW 001 OL
Frêne pigmenté blanc FW 001 OL



Buche Nuss BB 151 SG
Beech walnut BB 151 SG
Hêtre teinté noyer BB 151 SG



Esche schwarz FB 203 AM
Ash black FB 203 AM
Frêne noir FB 203 AM